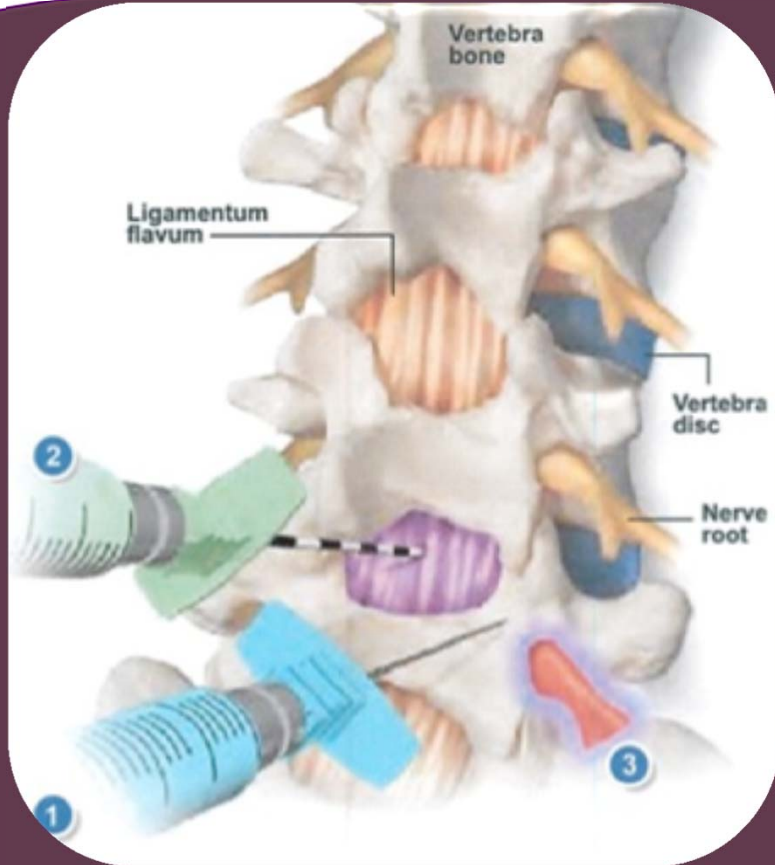


Spinal Cord Stimulation Trial



- The approach to this procedure is very similar to an (interlaminar) epidural steroid injection.
- Patients are positioned in the prone position (face down) using pillows for comfort
- Fluoroscopy (X-Ray) guidance used to identify the target
- An area of skin is cleaned to create a sterile field, sterile equipment is also used for the procedure
- The skin and tissues in the track of needle placement are anesthetized prior to advancing the needle
- Fluoroscopy views are taken to verify the final needle position
- Once the correct position is confirmed the leads are advanced into the epidural space to the desired to level
- Then the leads are connected to the programming device and adjusted according to the location of the patients pain.
- The needle is removed and the leads are covered to maintain sterility and generator is attached to a belt for the trial period.

RESTORING FUNCTION, IMPROVING LIVES